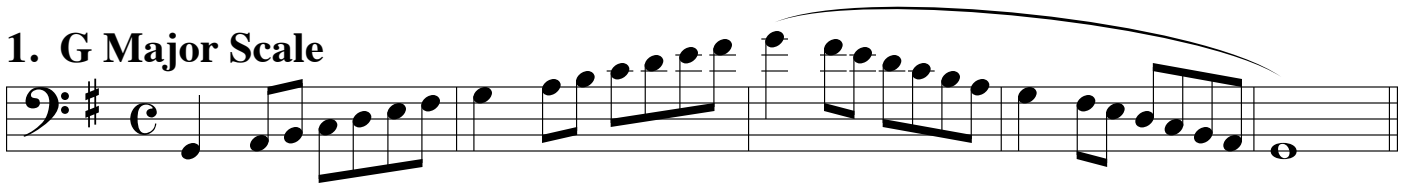


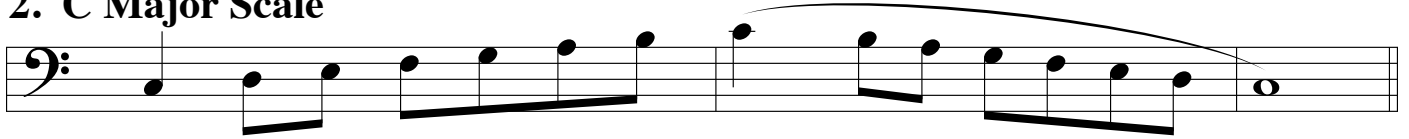
# ATSSB Trombone Scales

Scales should be performed as written and may or may not be performed connected. All scales are to be played at a minimum of  $\text{♩} = 120$

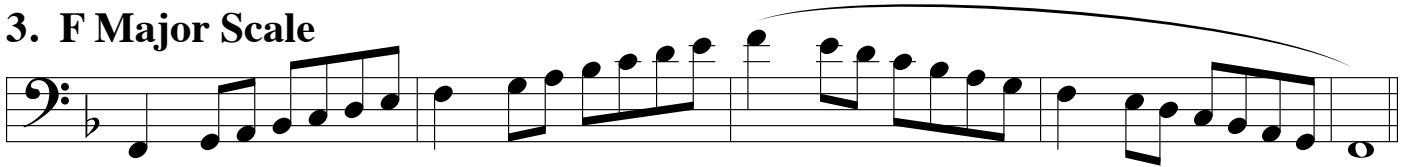
## 1. G Major Scale



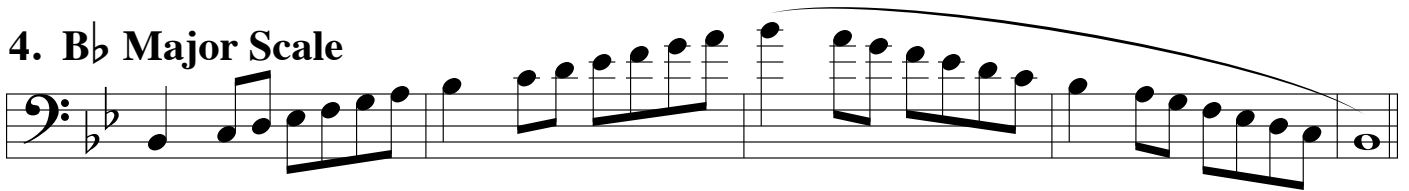
## 2. C Major Scale



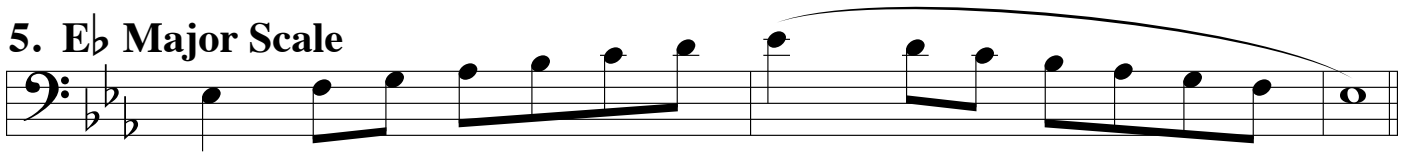
## 3. F Major Scale



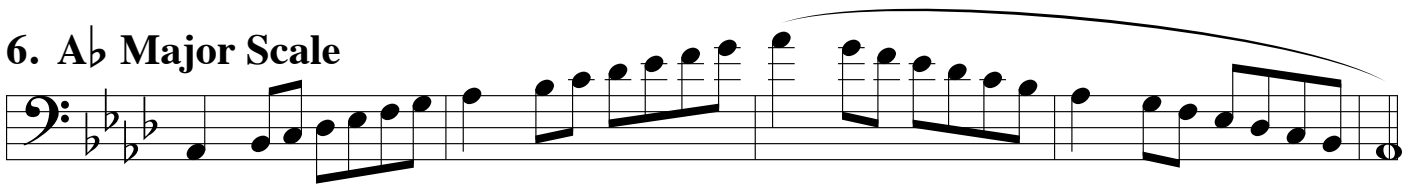
## 4. B $\flat$ Major Scale



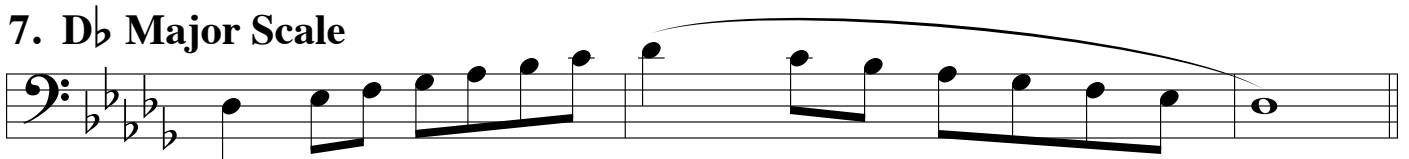
## 5. E $\flat$ Major Scale



## 6. A $\flat$ Major Scale



## 7. D $\flat$ Major Scale



## 8. Chromatic Scale

